

The Canary System

With PTR-LUM

POWERFUL DENTAL CARIES DETECTION



A New Era in Dental Care
Takes Flight

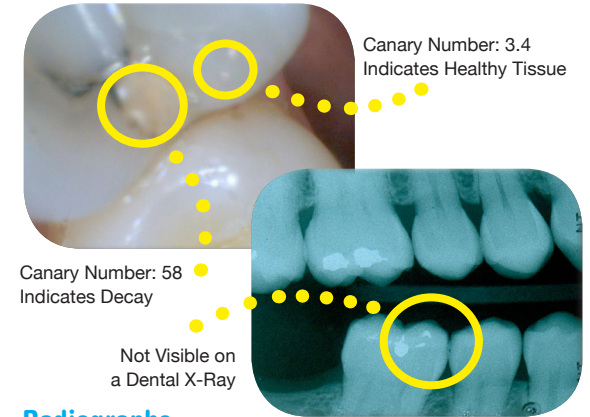


The Canary System with PTR-LUM technology is an accurate, repeatable and highly sensitive approach to the detection, monitoring and treatment of carious lesions. The system is centred around a painless, safe and non-invasive diagnostic tool.

The Canary System detects and monitors caries on all tooth surfaces – interproximal, occlusal, smooth, and root surfaces, including around restorations, and in pits and fissures. It is the only system that combines detection, remineralization treatment, and reports for the patient and oral healthcare provider, to create a paradigm shift in caries management.

The oral healthcare team can set up an early detection and remineralization program in the office, while the dentist continues to treat the more traditional lesions with conventional techniques. Oral healthcare providers, and their patients, will benefit from this entirely new preventative service.

DENTAL CARIES TREATMENT; SHIFTING FROM INTERVENTION TO REMINERALIZATION AND PREVENTION



Radiographs

- Routinely miss the vast majority of occlusal caries, including smaller early lesions
- Issues with radiation exposure
- Typically 40-60 percent of tooth surface needs to be demineralized before visible on x-rays

Explorers

- Can damage enamel by probing or by transferring bacteria from tooth to tooth, or deeper into fissures on tooth surface
- Unable to detect small lesions

Visual Examinations

- Unable to detect early demineralization
- Unable to detect lesions around restorations or in pits and fissures
- No means of recording subtle changes

Other Laser-Based Devices

- Limited tooth surface coverage
- Less accurate, sensitive and not-repeatable
- May require teeth be cleaned, dried, or isolated
- No patient reports available

The Canary System

- ✓ Sensitive repeatable measurements to monitor lesion changes
- ✓ Monitor remineralization and alter therapy as needed
- ✓ Create new patient treatment programs, run by members of dental team, that engage patients in their treatment

